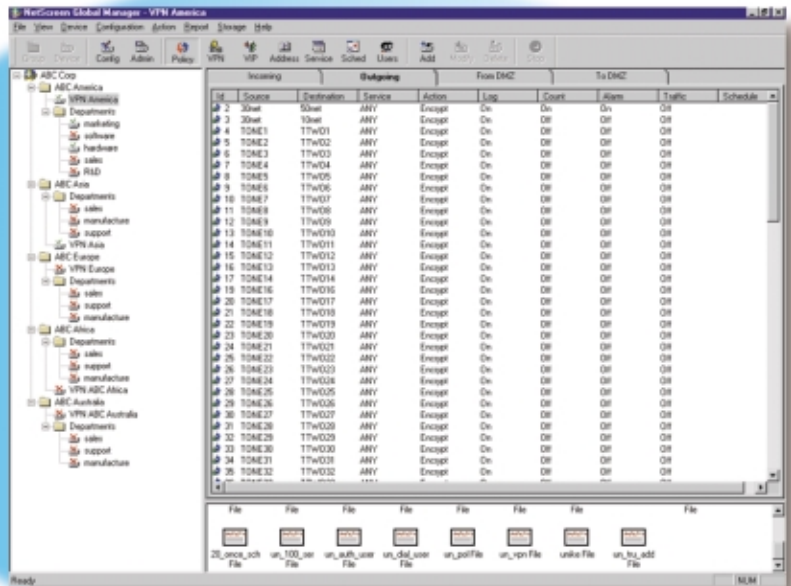


NetScreen Global Manager

Product at a glance

- Central security management for up to 1000 devices
- Secure configuration
- Monitoring
- Reporting



Product Overview

NetScreen's Global Manager facilitates easy centralized management of NetScreen's integrated Internet security appliances. Network managers at enterprises and service providers can control security for complex, multi-site networks from one location. This essential management application offers concurrent centralized configuration, status monitoring of up to 1,000 devices, graphical reporting of network activities and policy administration for all NetScreen-5, 10 and 100 appliances. It is a cost-effective tool that enhances productivity and network security saving both time and money.

NetScreen Global Manager simplifies Internet security for enterprise customers with multiple sites including telecommuters and branch offices and service providers who offer a managed security service. It features an intuitive graphical user interface with point and click programming ease. Global Manager is part of the NetScreen suite of integrated security products that offers high performance and ease of use for a variety of high traffic environments.

Centralized Management

NetScreen Global Manager provides simple Internet security management for large networks. Scalable up to 1000 appliances, it offers continued ease of management as your organization's needs grow. With centralized configuration and installation of additional NetScreen devices, you can ensure consistent device configurations reducing the cost of rollouts.

Global Manager will group appliances by location, division or customer for robust management of diverse or multi-client networks. From a single location, managers can check the status of multiple NetScreen appliances, monitor performance, troubleshoot existing configurations, or add remote sites to the network. All activities are conducted via VPN tunnels for the highest level of security.

Ease of Use

NetScreen Global Manager runs on Windows NT for easy installation on a desktop or server. Its point and click user interface is simple for even novice users, reducing ramp-up time. The program simplifies routine management tasks by using 'config' files as scripts. These features provide cost savings through significant reductions in management time and offer maximum efficiency in security network management.

Graphical Reporting

With push button ease, NetScreen Global Manager provides a variety of reports to maintain the highest level of network performance. By monitoring activity and continuous troubleshooting, Global Manager can facilitate planning for the network's optimal configuration. And you can do it from one location! Global Manager generates graphical reports summarizing network activity, resource utilization and event logs which allows you to analyze usage and performance trends.



NETSCREEN™

Broadband Internet Security Solutions

Applications

Enterprise

Central management of remote offices or telecommuters: Extending intranets out to remote offices and telecommuters is easy. Global Manager allows the network manager to securely configure and monitor all the security appliances. Reduce management costs at remote site and ease telecommuters help desk requests.

ASPs and ISPs

Central management of security appliances on the customer's premise. Allows managed firewall and managed VPN services. Creates policies, saves configurations, applies configuration scripts for multiple deployments.

Scalability

Like all NetScreen products, NetScreen Global Manager was designed to scale with the growth of your network security architecture. To ease administration and implementation, the software can be licensed to manage 10, 25 and up to 1000 devices. Global Manager works with all NetScreen integrated Internet security appliances, including NetScreen-5, 10 and 100, so you can deploy the proper device for the required bandwidth and performance.

The NetScreen Appliance Product Family

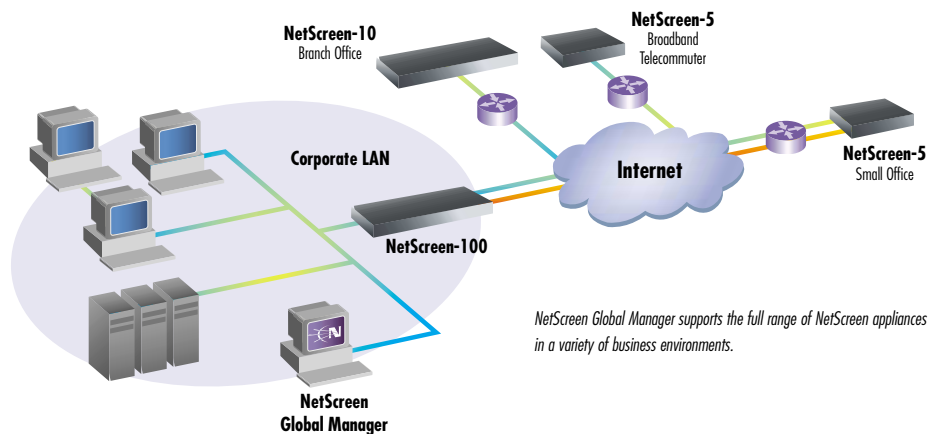
NetScreen is a leading developer of integrated Internet security appliances for e-business sites, broadband service providers, and high traffic enterprise networks. NetScreen's purpose-built ASIC-based hardware technology integrates powerful firewall, VPN, and

traffic shaping functionality into a single appliance. NetScreen products offer customers record-breaking wire-speed performance, manageability and ease-of-use in one comprehensive solution.

The NetScreen-100 integrates firewall, VPN and traffic management functionality for e-business sites, enterprise networks, and service providers at 100 Mbps.

The NetScreen-10 provides affordable full-featured security for medium-size enterprises, branch offices or departments within the enterprise Intranet at 10 Mbps.

The NetScreen-5 delivers fast, secure, cost-effective Internet connections to remote offices and telecommuters. It supports up to 10 users at broadband data rates at 10 Mbps.



Specifications

Options: Licenses available for 10, 25 or up to 1000 appliances

Prerequisites: Works with NetScreen-100, NetScreen-10 and NetScreen-5 (requires NetScreen OS software version 1.6 or later)

System Requirements: Windows NT 4.0 service pack 3, 4, or 5; Server or Workstation, Pentium II, 64 Mbytes RAM, 5 Mbytes of disk space per device managed, CD-ROM

NetScreen Product Warranty and Services

NetScreen Global Manager's standard software warranty is for a period of 90 days. Optional services are also available such as

extended software subscription products. These are recommended to keep the system updated with the latest software enhancements and to ensure high availability for end-users. Phone support services and training courses are also available from NetScreen.

Ordering Information

Product	Part Number
NetScreen Global Manager, 10 device license	NS-GL1-010
NetScreen Global Manager, 25 device license	NS-GL1-025
NetScreen Global Manager, 1000 device license (only 100 for reporting)	NS-GL1-001

For more information on NetScreen products, call Toll-Free at 1.800.638.8296

©2000 NetScreen Technologies, Inc. All rights reserved. Information in this document is subject to change without notice. NetScreen Technologies, Inc. assumes no responsibility for errors that appear in this document. NetScreen Technologies, Inc, the NetScreen logo, NetScreen-5, 10 and 100, NetScreen Global Manager, and NetScreen-Remote 2.0 are trademarks of NetScreen Technologies, Inc. All other trademarks and registered trademarks are the property of their respective companies. Literature Part Number: 2000.1.10.1.GM



NETSCREEN™

2860 San Tomas Expressway
Santa Clara, CA 95051
Phone: 408-330-7800
Fax: 408-330-7850

www.netscreen.com